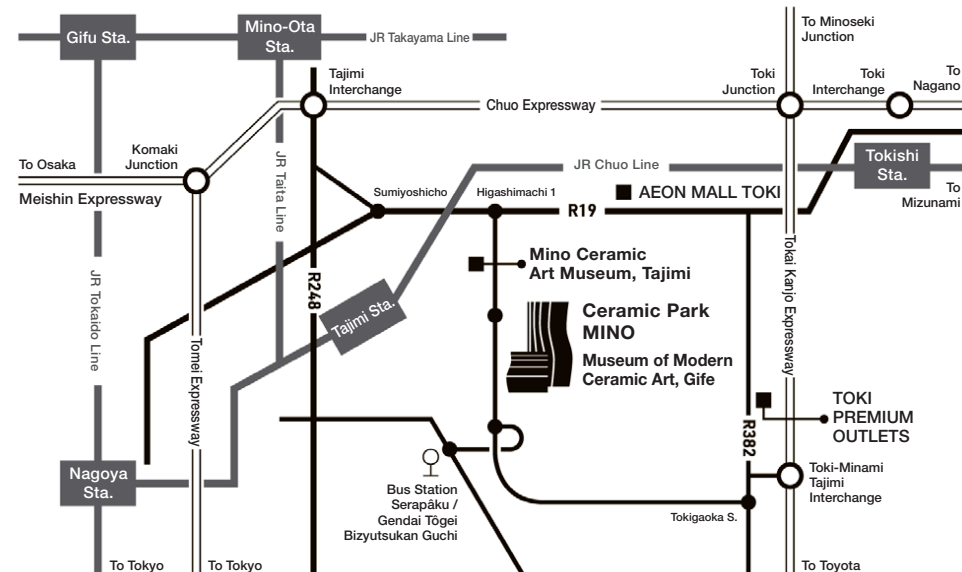
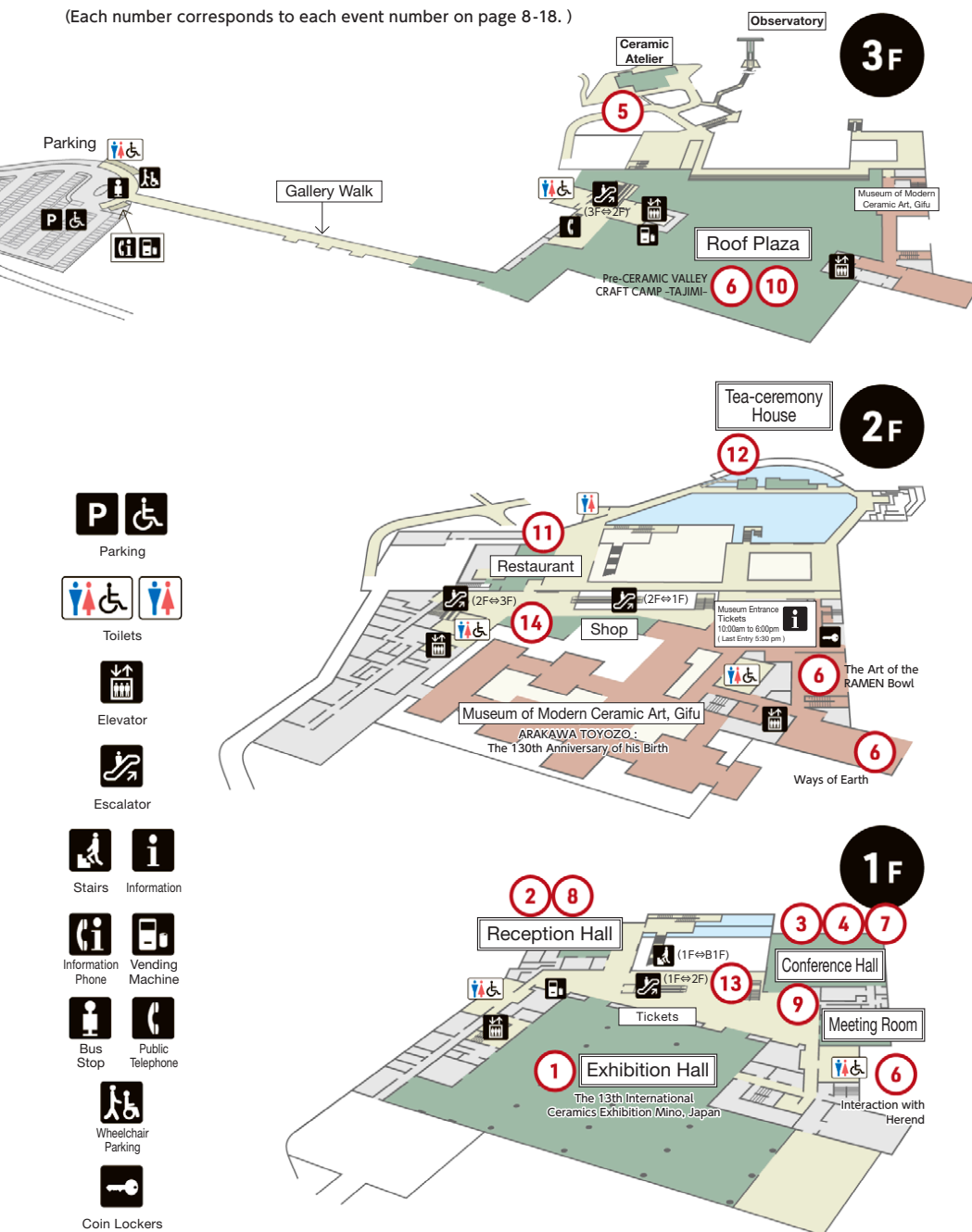


# Ceramics Park MINO Floor Map

(Each number corresponds to each event number on page 8-18.)



## By Train

### From Tokyo / Osaka

Nagoya Station ⇒ JR Chuo Line ⇒ Tajimi Station

From Tajimi Station

⇒ **By Taxi** approx. 10min

⇒ **By Bus**

Departure from Tajimi Station South Entrance

[ **weekends and national holidays** ]

▶ Tajimi City Community Bus (Kikyo Bus)

"Oribe kanko Route"

Arrival at Ceramics Park MINO

( for 20min )

[ **weekdays** ]

▶ Totetsu Bus [Tsumagi Line]・[Mizunami=Dachi=Tajimi Line]

Bus stop Serapaku / Gendai Toge Bizyutsukan Guchi

( for 15min ) About 10min on foot

## By Car

### From Tokyo

Tomei Expressway ⇒ via Toyota JCT, Shin-Tomei Expressway

⇒ via Toyota-Higashi JCT

### From Toyama

Tokai-Hokuriku Expressway ⇒ via Minoseki JCT

### From Nagano

Chuo Expressway ⇒ via Toki JCT

### Tokai-Kanjo Expressway

Exit at Toki-Minami Tajimi IC and drive approx. 5min.

### From Osaka

Meishin Expressway ⇒ via Komaki JCT

### Chuo Expressway

Exit at Tajimi IC, drive approx. 10min. on Route 19 to Toki /

Nakatsugawa direction ⇒ Turn right at the intersection of Higashimachi 1

## Executive Committee

### International Ceramics Festival Mino, Japan

Ceramics Park MINO 4-2-5 Higashi-machi, Tajimi City, Gifu Prefecture 507-0801, Japan  
TEL +81 572 25 4111



<https://www.icfmino.com>



# INTERNATIONAL CERAMICS FESTIVAL MINO'24, JAPAN

## OFFICIAL GUIDE BOOK

Fri October 18 – Sun November 17, 2024

Main Venue Ceramics Park MINO



「清涼の国ぎふ」  
文化祭2024  
地域文化発信事業

INTERNATIONAL CERAMICS  
FESTIVAL MINO'24, JAPAN

# One of the Biggest Ceramics Festivals in the World

“International Ceramics Festival Mino, Japan” is one of the world's largest ceramics festivals, held every three years since 1986 in Tajimi City, Mizunami City, Toki City, and Kani City in Gifu Prefecture, which are Japan's leading ceramic production areas. Under the main theme of “International Exchange of Earth and Flames,” the festival aims to further develop the ceramics industry and elevate culture through international exchange of ceramics design and culture. The main event, “the International Ceramics Exhibition Mino, Japan” is an internationally recognized ceramics competition that brings together works from countries and regions around the world. In addition, many other events closely related to the ceramic industry, region, and culture of the four cities will be held to enable visitors to fully experience and enjoy the history, charm of Mino-yaki, and local climate.



第39回国民文化祭 第24回全国障害者芸術・文化祭  
「清流の国ぎふ」文化祭2024  
ともに・つなぐ・みらいへ～清流文化の創造～  
2024年10月14日(月・祝)～11月24日(日)

The “Gifu, the Land of Clear Waters” Cultural Festival 2024 is a cultural celebration held in Gifu Prefecture. With the slogan “Together, Connecting, Toward the Future- Creating Clear Waters Culture-,” over 300 cultural and artistic events will take place. Among these, the International Ceramics Festival Mino'24 is a key event, positioned as a central feature of the “Gifu, the Land of Clear Waters” Cultural Festival 2024. This festival will show attractions of a variety of domestic and international ceramics and porcelain.

## CONTENTS

- 4 ..... **Greeting from Honorary President**
- 5 ..... **Greeting from chairperson**
- 6 ..... **Ticket Information**
- 7 ..... **Opening Commemorative Events**
- 8 ..... **The 13th International Ceramics Exhibition Mino, Japan**
- 11 ..... **Events Promoting Industry, Culture and Region**
- 19 ..... **Affiliated Organizations / Sponsorship**
- 20 ..... **about Set Ticket for 7 Museums**
- 24 ..... **Mino-yaki Open Factory**
- 26 ..... **Supporting Events**
- 28 ..... **MAP**
- 30 ..... **Event Calendar**

## Executive Committee of International Ceramics Festival Mino, Japan

**Honorary President**  
**Her Imperial Highness,**  
**Princess Kako of Akishino**



### Greeting

It is my great pleasure to note that the “International Ceramics Festival Mino, Japan,” will be held for the 13th time in Gifu Prefecture, renowned as the producing area of Mino-yaki, which is one of the most famous ceramics in Japan.

“The International Ceramics Exhibition Mino, Japan / International Ceramics Competition” is the central project of the festival. “The International Ceramics Competition” received 3,890 entries, which is the largest number ever, from 77 countries and regions, which is also the largest number ever. Those works winning prizes and honorable mentions have been chosen by a panel of 10 judges from Japan and overseas. During “The International Ceramics Exhibition Mino, Japan”, approximately 200 carefully-selected works will be on display. I hope that visitors to the exhibition will appreciate these works, which are full of the passion and originality of artists from around the world, and will feel the diverse charms of ceramics. In addition, events are planned under the concept of “Fascinating with Mino-yaki” with four themes: “Mino-yaki and People”, “Mino-yaki and Flowers”, “Mino-yaki and Sound” and “Mino-yaki and Food”. I will be happy if many people visit the festival and enjoy Mino-yaki from various perspectives.

I hope that the “International Ceramics Festival Mino, Japan” will convey the extensive attractions of ceramics and play a significant role in building the future of the ceramics industry and culture, and that this opportunity will help to further expand a wide range of exchange through ceramics.

## Executive Committee of International Ceramics Festival Mino, Japan

**Chairperson**  
**Governor of Gifu Prefecture**  
**Furuta Hajime**



### Greeting

Gifu Prefecture is blessed with the natural beauty of mountains and clear waters. The pristine rivers that flow from lush forests have brought peace and prosperity to the region and nurtured a world-class culture, manifesting master craftsmanship as shown in crafts such as Mino Washi (Japanese handmade paper), Hida woodwork, Seki swords and knives, and Tono ceramics. The local industries are built on this manufacturing spirit, nurtured by such history and traditions.

In particular, the cities of Tajimi, Mizunami, Toki, and Kani have been among the leading ceramic producing regions not only in Japan but also in the world. Although their history dates back to the 7th century, it was during the Azuchi-Momoyama period in the late 16th century that the art of tea ceremony flourished with the prized tea bowls of Kizeto, Setoguro, Shino, and Oribe. Their unrestrained creativity and vitality to break the mold of prevailing styles has now transcended in time and continues to inspire us even today. Inheriting the ideas and techniques of these predecessors, the world of Mino-yaki today produces a wide variety of products, ranging from Japanese and Western tableware to ornamental tiles. In this context, the “International Ceramics Festival Mino, Japan” has been held since 1986 under the theme “International Exchange of Earth and Flames.” Thanks to the efforts of many people, it is celebrating its 13th anniversary.

The main event of the festival, “the International Ceramics Exhibition Mino, Japan / International Ceramics Competition,” received the largest number of applications ever, making it one of the largest events of its kind in the world today. It is no exaggeration to say that the works selected by internationally renowned designers and curators are free from stereotypes and are truly masterpieces of the world’s highest standard.

Going forward, we expect that the “International Ceramics Festival Mino, Japan” will continue to make a significant contribution to the promotion of ceramics culture and the revitalization of the ceramics industry. We also hope this festival will gain even greater recognition as a venue for ceramics exchange that attracts worldwide attention and plays a role in creating a new era.

## Ticket Information

Types of Ticket	Division	Advance	Same day
Set-Ticket for 7 Museums	—	¥1,200	¥1,500
The 13th International Ceramics Exhibition Mino, Japan Single Ticket	Age 19&older	—	¥800
	Age 65&older	—	¥700

※ International Ceramics Exhibition Mino is free for high school students, 18 years old and younger, and persons with disability certificate and one accompanying person(accept MIRAIRO ID).



### 〈Set-Ticket can be used at〉

The 13 th International Ceramics Exhibition Mino, Japan  
Museum of Modern Ceramic Art, Gifu  
Mino Ceramic Art Museum, Tajimi  
MOSAIC TILE MUSEUM Tajimi  
Mizunami Ceramic Museum  
Tokishi Mino-ware tradition Industrial hall  
Arakawa Toyozō Museum (Kani city)

### 〈Purchase at〉

Each of 7 museums, Shop & Gallery MI-NO(Ceramics Park MINO), Boo-Woo Ticket, Ticket PIA and others. \* Please contact the organizer for more information.



### Special Offer of Set-Ticket for 7 Museums

## 7 Museums Stamp Collecting

After completing all the stamps, please come to the International Ceramics Festival Mino Office ( in Ceramics Park MINO ).  
You can receive a gift from us.

[Period] October 18 (Fri.) - November 17 (Sun.), 2024

\* The Stamp Collecting is located on the back cover of the "Set Ticket for 7 Museums".

\* The Stamp Collecting will end on November 17th or as soon as the gifts run out.

## Opening Commemorative Events

2024.10.18 [Fri.]

2:00pm Conference Hall

### Judges Talk Session



Judges from Japan and abroad will gather again at MINO to share their impressions of the judging process in the session titled "Looking back on the Judging."

2024.10.19 [Sat.]

### Kintsugi Events by Hiro KİYOKAWA

1:00pm Conference Hall

### Demonstration & Lecture

3:00pm Ceramic Atelier

### Experience Workshop (Advance reservation required)



Lacquer Art Restorer Kiyokawa will be invited to give a Kintsugi demonstration and lecture. This is a great opportunity to see up close "Kintsugi" which is now attracting attention around the world. After the lecture, Kintsugi experience workshop will be held as well.

2024.10.19 [Sat.]

3:00pm Conference Hall

### Lecture by Satoh Taku

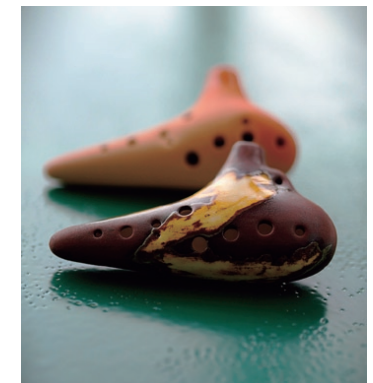


Graphic designer Satoh Taku will give a lecture on the "Ceramic Valley Exhibition."

2024.10.20 [Sun.]

2:00pm Conference Hall

### Minoyaki Ocarina Concert by Suzuki Kaori



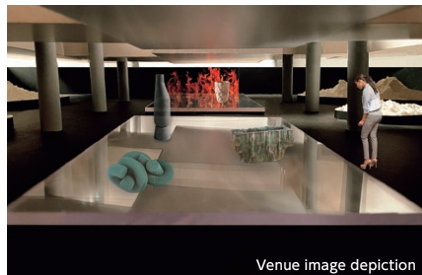
This is a Mino-yaki ocarina concert by professional ocarina player Suzuki Kaori. Please enjoy the sound of Mino-yaki.



# 1 The 13<sup>th</sup> International Ceramics Exhibition Mino, Japan

**October 18 [Fri.] - November 17 [Sun.] 2024 10:00am - 6:00pm** (Last Admission 5:30 pm)

**1st floor, Exhibition Hall** \* October 18th : 12:00pm - 6:00pm



Venue image depiction

It is a world-wide competition held with the aim of promoting further development of ceramic industry and culture through international exchange of ceramic designs and culture. This is one of the four biggest ceramic competitions in the world. This time, we have received amazing 3,890 entries from 77 countries and regions, and we were able to record the highest number ever. Approximately 200 works selected by renowned 10 judges from Japan and overseas are exhibited.

## JUDGES (The country name represents country or region of residence.)

### Ceramic Arts Category



**Sugaya Tomio**  
(Japan)

Director of Nakanoshima  
Museum of Art, Osaka



**Tashima Etsuko**  
(Japan)

Ceramist / Professor of  
Osaka University of Arts



**Rupert Faulkner**  
(United Kingdom)

Honorary Senior Research Fellow  
of Victoria and Albert Museum



**Claudia Casali**  
(Italy)

Art Historian /  
Director of International Museum  
of Ceramics in Faenza



**Cho Hyeyoung**  
(Republic of Korea)

Chairperson of the Korea Association of Art and Design  
Loewe-Foundation Craft Prize Expert Panel (jury  
member since 2020)  
Independent Art Director-Curator

### Ceramics Design Category



**Ishizaki Yasuyuki**  
(Japan)

Director of Museum of  
Modern Ceramic Art, Gifu



**Yoshida Ryutaro**  
(Japan)

CEO of Time & Style



**Yamada Setsuko**  
(Japan)

CEO of Twin Inc.  
/ Design Coordinator



**Patrick Reymond**  
(Switzerland)

Architect / Designer  
/ Co-founder of atelier oi



**Yokoyama Ikko**  
(Hong Kong)

M+ Lead Curator

## Awarded Works (Country name represents country of residence / nationality)

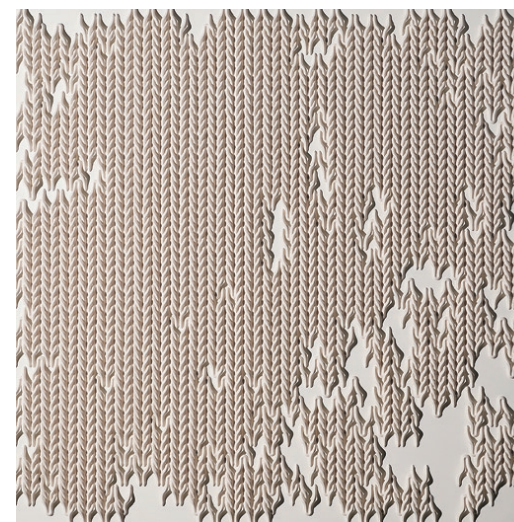


**GRAND PRIX**  
**Ceramic Arts**

**Kiln**

**IELIZAVETA PORTNOVA**

[ France / Ukraine ]



**GOLD AWARD**  
**Ceramics Design (Factory)**

**AMU**

**secca inc.**

[ Japan ]





**SILVER AWARD**  
Ceramic Arts

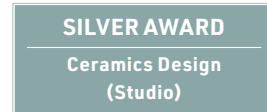
### Weaving into Ware

HU CHUNYU &  
JIANG YUTING  
[ China ]



**SILVER AWARD**  
Ceramics Design  
(Factory)

**momotto - ももっと -**  
ODA POTTERY CO.,LTD. /  
Amano Rie  
[ Japan ]



**SILVER AWARD**  
Ceramics Design  
(Studio)

**Dot series, Vase**  
EOM HEEJAE  
[ South Korea ]

**BRONZE AWARD**  
Ceramic Arts



**connection**  
CHAE MINWOO  
[ South Korea ]

**BRONZE AWARD**  
Ceramic Arts



**蝕基**  
(eroded moon)  
AIZAWA RIE  
[ Japan ]

**BRONZE AWARD**  
Ceramics Design  
(Factory)



**Vocum 21"**  
STUDIO VOCUM  
PIERLUIGI POMPEI AND ADAM FOXWELL  
[ Netherlands ]

**BRONZE AWARD**  
Ceramics Design  
(Studio)



**Fragment vase**  
SAKAI TOMOYA  
[ Japan ]

## Events Promoting Industry, Culture and Region

On October 18, all events open from 12:00pm to 6:00pm

### 2 Exhibition "Art Brut MINO"

Free Admission

**October 18 [Fri.] - October 30 [Wed.] 2024 10:00 am - 6:00 pm** (Last Admission 5:30 pm)  
1st floor, Reception Hall

The term "Art Brut" means "raw art" in French. It is art that is not influenced by tradition, fashion, or education, but rather expressed the impulse that comes from within.

This time, the exhibition will feature works by people with disabilities who express their inner thoughts and feelings through pottery, calligraphy, painting and other forms of art.

We hope you will enjoy these wonderful works that are not obsessed by conventional art.



### 3 The 9th Advanced Ceramics Course Ceramics Exhibition (SENKOUKA)

Free Admission

**October 23 [Wed.] - October 28 [Mon.] 2024 10:00am - 6:00 pm** (Last Admission 5:30 pm)  
1st floor, Conference Hall



Advanced Ceramic Course is a two-year course specializing in ceramics for high school graduates and above, and is located in Gifu Prefectural Tajimi Technical High School. The course is designed to learn and acquire knowledge and skills related to pottery from the basics. The course also provides an opportunity for students to present their work in order to gain a broader perspective on the world of pottery and to find their own path forward.

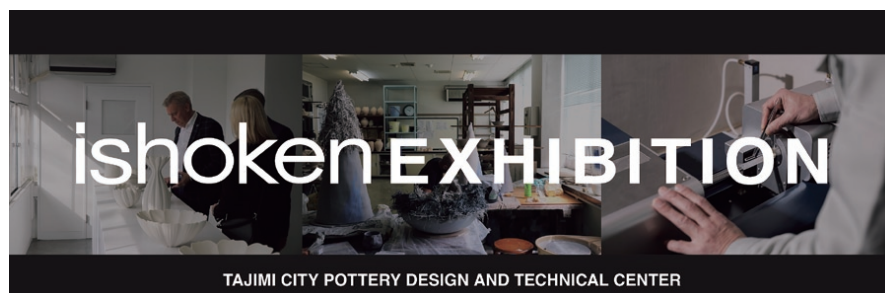
In 2012, we launched the Advanced Ceramics Course Ceramics Exhibition to provide a place for students who have completed their studies to present their works together, to be inspired by each other's approach to production, and to learn and work hard together in order to make further progress. We invite you to view the diverse group of ceramic works created by students in the Advanced Ceramics Course who took on the challenge of making ceramics.



## 4 ishoken EXHIBITION

Free Admission

**November 1 [Fri.] - November 5 [Tue.] 2024 10:00am - 6:00 pm** (Last Admission 5:30 pm)  
1st floor, Conference Hall



Tajimi city pottery design and technical center, "ishoken" was established in 1959, transferring operations from the Minoyaki Overglaze and Enamel Decoration Research Center. In the 65 years since then, "ishoken" has been aiming to contribute to the ceramics industry and culture, and we will introduce its current activities from the perspectives of industrial support, international exchange, and human resource development.

## 5 Making & Using Wood-Fired Kiln

**Kiln Firing**  
1st: **October 19 [Sat.] - October 20 [Sun.] 2024** In front of Ceramic Atelier  
2nd: **November 9 [Sat.] - November 10 [Sun.] 2024** (outside)

Kiln firing will be held twice during the International Ceramics Festival Mino '24, Japan. Anyone can observe the kiln firing.



## 6 Minoyaki Exhibition (CERAMIC VALLEY Exhibition)

**October 18 [Fri.] - November 17 [Sun.] 2024 10:00am - 6:00 pm** (Last Admission 5:30 pm)

### The Art of the RAMEN Bowl

2nd floor Museum of Modern Ceramic Art, Gifu  
Gallery II

This is a special exhibition to encourage visitors to become familiar with and interested in Mino-yaki, centered on the triumphant return of the "The Art of the Ramen Bowl" exhibition held at Japan House in Sao Paulo and in Los Angeles.



### Interaction with Herend

1st floor Meeting Room

Visitors can see the triumphant return of the "Mino Ware Exhibition" held at the Porcelain Museum of Herend in Hungary, and also the exhibits of Herend products, one of the world's finest porcelain. There will also be a lecture with an employee of Herend Porcelain Manufactory.



Craft fair held in order in 4 cities

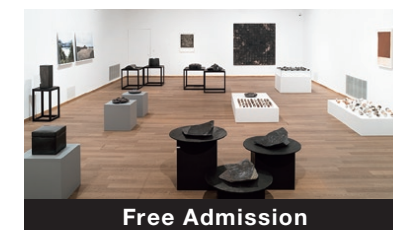
**Pre-CERAMIC VALLEY  
CRAFT CAMP -TAJIMI-**  
**November 9 [Sat.] 10:00 am - 4:00pm**  
Roof Plaza



Hungary-Japan Cultural Exchange Exhibition

### Ways of Earth

**October 18 [Fri.] - November 17 [Sun.]  
10:00 am - 6:00pm** (Last Admission 5:30pm)  
Museum of Modern Ceramic Art, Gifu Project Room



## 7 The 26th MINO Chawan Exhibition

**November 8 [Fri.] - November 17 [Sun.] 2024 10:00am - 6:00 pm** (Last Admission 5:30 pm)  
1st floor, Conference Hall

**Free Admission**

It is a public exhibition of ceramics bowls held every two years organized by Mino Ceramic Art Association. We invite you to view the tea bowls selected through a rigorous judging process at the exhibition.



**Grand Prix**

**Kato Mami**  
TATARA-YABURE-WAN  
「タタラ破れ罍」



**Gold Award**

**Shimizu Takeshi**  
ENYOU-CHAWAN  
「塩窯茶罍」



**Silver Award**

**Saiki Toshihide**  
ORIBE-SAIMON-CHAWAN  
「織部彩文茶罍」



**Bronze Award**

**Suzuki Hideaki**  
IROE-YUURIKINSAIKOUKI-CHAWAN  
「色絵釉裏金彩光輝茶罍」

## 8 Flower Arrangement Contest in MINO

**Preliminary Stage : November 2 [Sat.] Exhibition : from November 2 [Sat.] 2024**

**Final Stage : November 9 [Sat.] Exhibition : from November 9 [Sat.] 2024**

**1st floor, Reception Hall** \*Visitors are allowed to observe during the creation process.

**Free Admission**

Minoyaki flower vases and colorful flowers complement each other. Through the works, visitors will enjoy Minoyaki, which is not only tableware. The Minoyaki flower vases to be used in the Final Stage will be provided by past Silver and above award winners in the International Ceramics Exhibition Mino, Japan, who is currently active in Gifu Prefecture, as well as members of Mino Ceramic Art Association. Please enjoy the flowers, the vases, and the fragrance as well !





## 9 Mino-yaki Ocarina & cerarina Concert

Every Saturday, Sunday and National Holiday afternoon during the festival  
(from Oct.26 [Sat.]) 1st floor, Lobby Special Stage

**Free Admission**

Local ocarina lovers will present a performance of ocarina and cerarina made of Minoyaki. Please enjoy the sounds of Minoyaki.



## 10 Tajimi Minoyaki Taiko Performance

November 9 [Sat.] 2024 Roof Plaza

The drums are made of Minoyaki. Visitors can enjoy their dynamic performance.



## 11 MINO Re-Lunch

October 18 [Fri.] - November 17 [Sun.] 2024 11:00am - 3:00 pm (Last Order 2:00 pm)

2nd floor, Restaurant

Servings : 20 on weekdays, 50 on weekends and national holidays

(Priority for customers with reservations)

Price : ¥3,300

\* Please contact us for the opening hours of October 18.

You can enjoy a lunch supervised by a famous local restaurant that makes the most of the local harvest (ingredients). Re-SHOKKI (recycled tableware) created through the environmental efforts of Minoyaki industry will be used.

\* The restaurant also offers other menus ( meals ).



## 12 Tea Ceremony "A Cup of Tea in a Minoyaki Tea Bowl"

Every Saturday, Sunday and National Holiday during the festival

10:00am - 3:00pm Tea-Ceremony House "Kenshuan"

\* Open on October 18 [Fri.], please contact us for the opening hours.

¥800 per cup (with wagashi) \* The event will end when all the sweets are gone.

Enjoy a cup of tea in a Minoyaki tea bowl made by the late Kato Kozo, a living national treasure, and other famous artists. You will have a chance to experience the authentic tea bowl. You can also enjoy tea in special vessels made by Hungarian artists in the following period as well.  
Oct.18 [Fri.] - Oct.20 [Sun.]  
Nov.2 [Sat.] - Nov.4 [holiday / Mon.]

Kato Kozo (Setoguro)  
Ceramics Park Mino



## 13 cafe

**October 18 [Fri.] - November 17 [Sun.] 2024 11:00am - 4:00pm 1st floor, in front of escalator**

\* Please contact us for the opening hours of October 18.

Enjoy beverages in the special cups made by local Minoyaki makers.



## 14 Shop & Gallery MI-NO

**October 18 [Fri.] - November 17 [Sun.] 2024 10:00am - 5:30pm 2nd floor, Shop & Gallery MI-NO**

\* Oct. 18 open 12:00pm-5:30pm

This is a select shop of Minoyaki in Ceramics Park MINO. The shop offers a wide range of Minoyaki, from daily-use vessels made by potters to works by ceramic artists and tile products, all of which are current and unique to the area. In addition, there are also locally loved sweets and other items, allowing visitors to find souvenirs and gifts to commemorate their visit to Mino.



Shop & Gallery MI-NO

## Affiliated Organizations

Gifu Prefecture  
Tajimi City  
Mizunami City  
Toki City  
Kani City  
Federation of Japan Pottery Manufacturers' Co-operative Associations  
Japan Federation of Pottery Wholesalers' Co-operative Association  
Japan Tile Manufacturers' Association Gifu Branch  
Federation of Gifu Pottery Industry  
Tajimi Chamber of Commerce and Industry  
The Mizunami Chamber of Commerce and Industry  
Toki Chamber of Commerce and Industry  
Kasahara Chamber of Commerce and Industry  
Gifu Pottery Industry Co-operative Association  
Gifu Pottery Wholesale Co-operative Association  
Gifu Tile Wholesale Co-operative Association

Gifu Ceramics Material Association  
Gifu Plaster Mold Manufacturers' Co-operative Association  
Gifu Ceramic Design Council  
Gifu Ceramic Designers' Association  
Gifu Oil Wholesale Association Tajimi Branch  
Mino Ceramic Art Association  
JETRO Gifu  
Gifu Institute of Invention and Innovation Tajimi Branch  
Tajimi Constructors' Association  
Junior Chamber International Tajimi  
Junior Chamber International Mizunami  
Junior Chamber International Toki  
Mino Ceramic Art Museum, Tajimi  
Tajimi International Exchange Association  
Ceramics Park MINO Foundation  
Chunichi Shimbun Co., Ltd.  
Council of CERAMIC VALLEY

## Subsidized by

Tono Seibu Large Area Administrative Union  
Toshin Regional Promotion Cooperation Fund

## Supported by

Ministry of Foreign Affairs of Japan  
Ministry of Economy, Trade and Industry  
Agency for Cultural Affairs of Japan  
The Small and Medium Enterprise Agency  
Gifu Prefectural Board of Education  
Tajimi City Board of Education  
Mizunami City Board of Education  
Toki City Board of Education  
Kani City Board of Education

## Sponsored by



多治見営業所





## Museum of Modern Ceramic Art, Gifu

### ARAKAWA TOYOZO : The 130th Anniversary of his Birth

**September 14 [Sat.] - November 17 [Sun.] 2024**

Address : Ceramics Park MINO, 4-2-5 Higashimachi, Tajimi city, Gifu 507-0801, Japan  
TEL : +81 572-28-3100

Hours : 10:00 am - 6:00 pm (Last Admission 5:30 pm)

Closed : Mondays (or the following weekday if Monday is a holiday) but open throughout the festival period

Parking lot : Free (approx. 300 cars, approx. 200 cars in temporary parking lot)

Single Ticket : Adult 1000yen / University student 800 yen / Free for high school students and younger, persons with disability certificate and one accompanying person (accept MIRAIRO ID)

Toyozo Arakawa (1894-1985) is a leading figure in modern Japanese ceramics from Gifu Prefecture and a holder of two Important Intangible Cultural Properties (Living National Treasures) for Shino and Setoguro ceramics. He demonstrated that Shino-type ceramics from the Momoyama era, previously believed to originate from Seto (Aichi Prefecture), were actually produced in the Mino region (Gifu Prefecture) by discovering the ceramic shards himself.

On the occasion of the 130th anniversary of his birth, this exhibition looks back at the life and work of Arakawa, a pioneer of Mino ceramics, through a diverse array of ceramics, calligraphy, paintings, collected objects, and personal items that convey aspects of his friendships and lifestyle.



Arakawa Toyozo  
《Fresh-water jar, Shino type》1938-41  
Museum of Modern Ceramic Art, Gifu



## Mino Ceramic Art Museum, Tajimi

### Hineno Sakuzo : The 40th Anniversary of his Death — Design that Connects People The Footsteps of Mino —

**September 7 [Sat.] - January 26 [Sun.] 2025**

Address : 1-9-27 Higashimachi, Tajimi city, Gifu 507-0801, Japan TEL : +81 572-23-1191

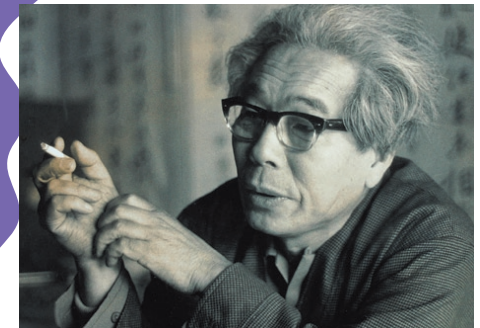
Hours : 9:00 am - 5:00 pm (Last Admission 4:30 pm)

Closed : Mondays (or the following weekday if Monday is a holiday)

Parking lot : Free (approx. 50 cars)

Single Ticket : Adult 320yen / University student 210 yen / Free for high school students and younger, persons with disability certificate and one accompanying person (accept MIRAIRO ID)

This exhibition introduces Hineno Sakuzo (1907-1984), known as a pioneer in ceramic design. After the World War II, Hineno visited Mino, Aichi, Mie, and Shiga, and contributed to the spread of design and education in the ceramic industry of Japan. This exhibition traces the life of Hineno Sakuzo through his works and materials, and reconsiders his activities 40 years after his death.



Portrait of HINENO Sakuzo  
1966  
Mie Prefectural Art Museum Collection



## MOSAIC TILE MUSEUM Tajimi

### Blue Temptation — The World of Blue in Tiles —

**September 14 [Sat.] - March 9 [Sun.] 2025**

Address : 2082-5, Kasahara cho, Tajimi City, Gifu 507-0901, Japan TEL : +81 572-43-5101

Hours : 9:00 am - 5:00 pm (Last Admission 4:30 pm)

Closed : Mondays (or the following weekday if Monday is a holiday)

Parking lot : Free (approx. 180 cars, approx. 110 cars in temporary parking lot)

Single Ticket : Adult 310yen / Free for high school students and younger, persons with disability certificate and one accompanying person (accept MIRAIRO ID)

This exhibition will showcase the appeal of tiles from the viewpoint of the color "blue". The color "blue," which has always been close to human beings, has universal value regardless of time and place. This exhibition traces the blue tiles in the museum's collection in chronological order and highlights the "blue" of Yamauchi Itsuzo as well. More than 20 companies have been invited to display their blue tiles in a white cubic space resembling a tea ceremony room to present new possibilities of "blue" in contemporary tile art.



Majolica Tile (Kinryo Yamauchi Ceramic Tile)  
around 1930  
MOSAIC TILE MUSEUM Tajimi



## Mizunami Ceramic Museum

### Mizunami City 70th Anniversary Special Exhibition Sone Jisoen Pottery – a Pioneer of the Modern Mino Ceramic Industry

**October 12 [Sat.] – February 23 [Sun.] 2025**

Address : 1-6 Yamanouchi, Akiyo cho, Mizunami City, Gifu 509-6132, Japan TEL : +81 572-67-2506  
Hours : 9:00 am – 5:00 pm (Last Admission 4:30 pm)  
Closed : Mondays (if Monday is a national holiday, open on Mon, and closed on Tue. and Wed.),  
The day after a national holiday, Tue. Dec.3, Fri. Jan. 31(for material clearance), Sat.Dec.28-Sat. Jan.4  
Parking lot : Free (approx. 20 cars)  
Single Ticket : Adult 200yen / Free for high school students and younger, persons with disability certificate and one accompanying person(accept MIRAIRO ID)

Sone Jisoen Pottery is a ceramics manufacturer founded in 1861 in Mashizume, Sue-cho, Mizunami City. From the Taisho era to the early Showa era, the company mined raw materials and also manufactured tiles, leading the Mino ceramic industry, and after the World War II, it grew to become one of Japan's leading Western tableware manufacturers. We will exhibit Western tableware and other items produced by Sone Jisoen Pottery from the Meiji to Heisei era, and publish a catalog of the exhibited items and company history.



Floral Dinnerware Set  
Early Showa Period  
Mizunami Ceramic Museum Collection



## Tokishi Mino-ware tradition Industrial hall

### Toki City Historical Museum of Mino Ceramics Exhibition outside the museum The Post-Oribe Era

**October 5 [Sat.] – January 26 [Sun.] 2025**

Address : 1429-8 Kujiri, Izumi cho, Toki city, Gifu 509-5142, Japan TEL : +81 572-55-5527  
Hours : 9:00 am – 4:30 pm  
Closed : Monday (if Monday is a holiday, open on Monday, and closed on Tuesday and Wednesday),  
the day after a national holiday (if Saturday is a national holiday, open on Sunday,  
and closed on Tuesday), Year-End and New Year holidays  
Parking lot : Free (approx. 120 cars) Single Ticket : Free

From the Azuchi-Momoyama era to the early Edo era, Mino kilns produced Mino Momoyama tea ceramics such as Kizeto, Setoguro, Shino, and Oribe in response to the popularity of the tea ceremony in Kinai region (Kyoto/Osaka area). Later, Oribe was replaced by "Ofuke," a type of pottery that was conscious of Chinese celadon. The period of the Genna era (1615-1624), when the production of Ofuke ceramics began, was a time of stability in the Tokugawa shogunate and the succession of the greatest tea masters in Japan, from Furuta Oribe to Kobori Enshu. This exhibition examines the characteristics and significance of the production of Ofuke.



Tea bowl, Ofuke glaze  
Early 17th century  
Kamagane kiln



## Arakawa Toyozō Museum (Kani city)

### Toyozō's Shino and Setoguro —The Challenge of Mino Momoyama Pottery—

**October 4 [Fri.] – December 1 [Sun.] 2024**

Address : 352 Kakishitairiai, Kukuri, Kani city, Gifu 509-0234, Japan TEL : +81 574-64-1461  
Hours : 9:30 am – 4:00 pm (Last Admission 3:30 pm)  
Closed : Mondays, the day after a national holiday (open on national holidays)  
Parking lot : Free (approx. 23 cars)  
Single Ticket : Adult 210yen / Free for high school students and younger, persons with disability certificate and one accompanying person (accept MIRAIRO ID)

The year 2024 marks the 130th anniversary of Toyozō Arakawa's birth. To commemorate this occasion, this exhibition focuses on "Shino" and "Setoguro," for which Toyozō was certified as a Living National Treasure. The certification for individual pieces of pottery, rather than as a production area of Minoyaki (Mino-ware), reflects the uniqueness of the technique. In addition to introducing the technique, the exhibition will also show works from different periods of time, looking at the process of how Toyozō developed his own unique expression from a reproduction of Momoyama pottery. We hope you will enjoy Toyozō's works, which are different from Momoyama ceramics.

Concurrent Exhibit: Fuufu no Kizuna Exhibition  
( Married Couple's Bond Exhibition)



Tea bowl, called "Yadonoume(Plum blossoms at the inn)," Mino ware, Shino type  
Arakawa Toyozō 1970





# Mino-yaki Open Factory

## Kakuyama

"Kakuyama" was founded in 1897. Each product is carefully hand-painted and finished one by one. Visitors can experience pottery making while observing daily operations, such as the products lined up on a board and being dried in the courtyard.

## Factory tour, pottery experience, painting experience

**Price :** Pottery experience 4,000 yen  
Painting experience 1,500 yen  
**Reservation :** Telephone 0572-55-2886  
Inquiry form



WEB

## Nanayosha

Visitors can see behind-the-scenes of the creation of "yakumono" (special tiles of corners and edges) and accessories, which are not usually seen. In the workshop, visitors can try making pottery accessories by coloring and shaving the base material.

## Factory tour and workshop

**Price :** 3,500 yen per person  
(For 2 or more people, 1,000 yen discount,  
2,500 yen per person)  
**Reservation :** Telephone 0572-22-0388  
Inquiry form



WEB

## NITTO SEITOSH CO.,LTD

A tour of tile factory and tile coaster making are available. This special plan includes a drink from the Swan Tile Cafe produced by the company.

## Factory tour and workshop

**Fee :** 1,000 yen  
**Reservation :** Telephone 0572-27-2155  
Email mina-kato@nittoseitosh.co.jp  
Please let us know your desired  
date, name, contact information,  
and number of people.



WEB

## OZAWA MOSAIC WORKS

You can watch the production of mosaic tiles and try making accessories using the tiles.

## Factory tour and workshop

**Price :** From 2,500 yen  
**Reservation :** Please apply from CONTACT  
on our website.



WEB

## CERAMESSE CORPORATION

A tour of tile factory and a show-room are available. Visitors can observe the tile manufacturing process. Workshops using tiles are also available.

## Factory tour and workshop

**Price :** Factory tour 300 yen  
Workshops are charged separately.  
Please apply at the time of  
reservation  
**Reservation :** Telephone 0572-43-3213



WEB

## Kobeigama

"Kobeigama" opened in 1804. Visitors can see the main building, the exhibition room (special exhibition), Museum of Old Ceramics, the Arts and Crafts Museum, and observe the creation of accessories, as well as experience painting accessories.

## Factory tour and workshop

**Fee :** 300 yen for tour  
Painting experience  
Domestic 5,500 yen (shipping included)  
Overseas 11,000 yen (shipping included)  
**Reservation :** Telephone 0572-22-3821  
Email info@koubei-gama.co.jp



WEB

## TANZAN

Tanzangama Kiln was established in 1952 and has been in operation for 72 years in Dachi Town, Toki City. Tanzan produces hand-painted vessels that can only be produced by the Tanzangama kiln. Visitors can observe the entire process from clay kneading to painting in about one hour.

## Factory tour

**Price :** Free  
**Reservation :** Telephone 0572-59-4188  
(telephone reservations accepted)  
Please make your reservation  
at least 2 days in advance.  
Please note that we may not  
be able to accept your request  
due to manufacturing reasons.



WEB

## Sugiura Pottery

Visitors can tour a tile factory and show-room. You can see up close the site where the tiles are made and the kiln where the tiles are fired.

## Factory tour

**Fee :** Free  
**Reservation :** by email  
info@sugy.jp  
Instagram DM  
@sugy.ceramic.tile



WEB

## Toki City Tourism Association

Special 'moments (toki)' to be enjoyed in the city with the highest ceramics production area in Japan – you will see that the various 'moments' of Toki City will open. Enjoy experiences that you can't normally have !

## Hiraku, Toki Toki City OPEN DAY

Prices and reservation information are available at "Hiraku Toki" website.



WEB

## Dachi Kamaya Net (Dachi Kiln Association)

You can visit the kilns in the ceramic production area 'Dachi'. A tour in the factory and shopping in the gallery are available.

## Dachi - Kamaya Meguri

**Fee :** Free  
**Reservation :** Please visit  
the "Dachi Kamaya Net"  
website.



WEB

\* The content of the QR code may change depending on the publication period.

# Supporting Events

## Exhibitions

### with Art

July 4 – Sep. 29, 2024  
Toshin Mino Ceramic Art Museum



### Miffy related exhibition

Aug. 1 – Nov. 24, 2024  
Children's Ceramic Museum



### Forefront of Ceramics

The Recent Winners of THE INTERNATIONAL CERAMICS COMPETITION MINO, JAPAN - Part 1 -

Sep. 1 – Oct. 27, 2024  
Tajimi City Cultural Atelier gallery VOICE



### ishoken gallery vol.16 Nakai Namika Exhibition

Sep. 21 – Nov. 17, 2024  
ishoken - Tajimi City Pottery Design and Technical Center



### Memorial special exhibition Living national treasure Kato Kozo, Hirashibadani pottery studio

Sep. 21 – Nov. 24, 2024  
Kani Local Museum



### Taihaku-yaki Exhibition

Sep. 27 – Nov. 24, 2024  
Ichinokura Sakazuki Art Museum 1st floor, Exhibition Room



### Shibata Ayami Exhibition

Sep. 28 – Oct. 20, 2024  
ORIBE UTSUWATEI



### 100+ Selections of Mino 2024

Oct. 3 – Dec. 22, 2024  
Toshin Mino Ceramic Art Museum



### 25th anniversary project Favorite Shapes Exhibition

Oct. 5 – Oct. 20, 2024  
gallerysuki



### ART in YELL

Oct. 8 – Nov. 17, 2024  
Toshin Manabino-oka "YELL"



### Honmachi Oribe Street Machinaka Art Museum

Oct. 12 – Oct. 14, 2024  
Honmachi Oribe Street district



### Modern Shino Beginning with Arakawa Toyozo

Oct. 12, 2024 – Feb. 24, 2025  
Mino Ceramic Art Museum, Tajimi



### 220th Anniversary of the Foundation: Kobeigama Successive "Blue and White" Exhibition

Cobalt Blue Genealogy  
Oct. 18 – Nov. 17, 2024  
Kobeigama, 2nd floor of the main building, exhibition room  
(Museum-Arts and crafts Museum are also open for tours.)



### Small Universe Exhibition Vol.8

Oct. 19 – Nov. 10, 2024  
Ichinokura Sakazuki Art Museum Gallery "Chu"



### Hosokawa Reiko Exhibition

Nov. 2 – Nov. 14, 2024  
Galleria Oribe



### 25th anniversary project Guinomi exhibition

Nov. 2 – Nov. 17, 2024  
gallerysuki



### Forefront of Ceramics

The Recent Winners of THE INTERNATIONAL CERAMICS COMPETITION MINO, JAPAN - Part 2 -

Nov. 2, 2024 – Jan. 13, 2025  
Tajimi City Cultural Atelier gallery VOICE



### Arakawa Toyozō Museum, special viewing in autumn

Nov. 16 – 17, 2024  
Arakawa Toyozō Museum (Kani city)



## Tajimi

### Tajimi Ceramic Festival

Oct. 13 – 14, 2024  
Minoyaki Wholesale Center



### The 13th MINOYAKISAI

Oct. 12 – 14, 2024  
JR Tajimi Station North-South Link Line, etc.



### The 52nd Tajimi Festival

Nov. 3, 2024  
Tajimi city center



## Mizunami

### Mizunami Pottery Festival

Nov. 10, 2024  
Mizunami City Industrial Promotion Center



## Toki

### Toki Autumn Festival "UTSUWA SAGASHI"

Oct. 26 – 27, 2024  
each venue in Toki city



### MINI TOKI

Toki City Hall Parking Lot

### The 38th Minoyaki Traditional Crafts Festival

Tokishi Mino-ware traditional Industrial hall,  
Mino ceramic art village



### Oribe Hills Touki-ichi

Oribe Hills



### Oroshi's Ceramic Artisan Cultural Festival

Tokkuri Ground,  
Around the pottery studios in Oroshi Town



### Dachi Donburi Festival 2024

Around the pottery studios in Dachi Town



## Regional Collaboration Events

### CERAMIC VALLEY

#### ART in MINO growing from the clay 2024

Oct. 18 – Nov. 17, 2024  
6 exhibition sites in 3 cities in Tono-area  
(Galerie Momogusa, Takada pottery kiln, Former Earth Corridor Munitions Factory Site, Nakajima-Jozo, Residence of Koyama Fujio, building of Oroshi Pottery Industry Co-operative Association)



### A collection of autumn items from Higashi Mino!

~ A big gathering of autumn items from Higashi Mino! ~

Oct. 26 – 27, 2024  
Terrace Gate Toki  
Machiyui Event Space



### Autumn Sweets Fair Kuri Kinton & Chestnut sweets

Oct. 26 – 27, 2024  
Terrace Gate Toki  
Machiyui Hall  
Moto erasu Higashi Mino



## Events

### Minoyaki Ocarina Painting & Performance Workshop

Aug. 3 – Sep. 29, 2024  
4cities of Tajimi・  
Mizunami・Toki・Kani



### Forefront of Ceramics LECTURE [The Position of Contemporary Ceramics] (Lecturer: Sugaya Tomio)

Oct. 19, 2024  
Tajimi City Cultural Atelier  
gallery VOICE



### TAMAKI CUP

Oct. 26 – Nov. 10, 2024  
Tamaki-Saketen,  
2nd floor,  
kakurega



## Special Supporting Events

At the following two facilities, you can get special offers when you show your Set-Ticket for 7 Museums.

Children's Ceramic Museum

10-6-67 Asahigaoka, Tajimi-city TEL +81-572-27-8038

During the Festival Period

Admission fee **10% OFF**

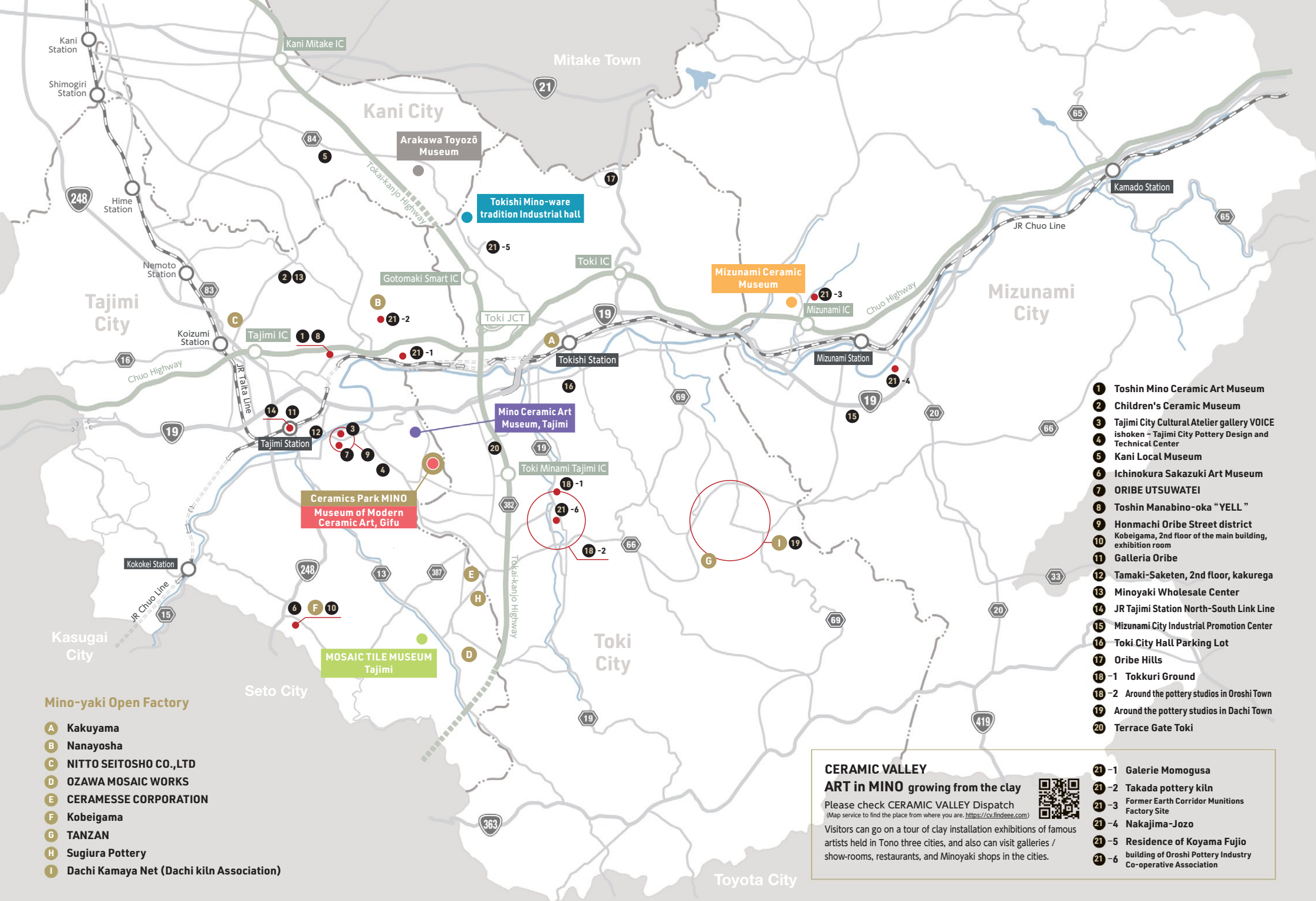
Ichinokura Sakazuki Art Museum

6-30-1 Ichinokura-cho, Tajimi-city TEL +81-572-24-5911

During the Festival Period

Postcard will be given to visitors.

\*The content of the QR code may change depending on the publication period.



							Period																													
VENUE		E V E N T		PAGE	PERIOD	October												November																		
						18	19	20	21	22	23	24	25	26	27	28	29	30	31	1	2	3	4	5	6	7	8	9	10	11	12	13	14	15	16	17
						FRI	SAT	SUN	MON	TUE	WED	THU	FRI	SAT	SUN	MON	TUE	WED	THU	FRI	SAT	SUN	MON	TUE	WED	THU	FRI	SAT	SUN	MON	TUE	WED	THU	FRI	SAT	SUN
Ceramics Park MINO	1F Exhibition Hall	①	The 13th International Ceramics Exhibition Mino, Japan	P8 - P10	10/18 to 11/17																															
	1F Conference Hall	Opening Commemorative Events	Award Ceremony / Opening Ceremony etc.	P7	10/18																															
			Kintsugi Events by Hiro KIYOKAWA/ Demonstration & Lecture Lecture by Satoh Taku	P7	10/19																															
			Minoyaki Ocarina Concert by Suzuki Kaori	P7	10/20																															
			③ The 9th Advanced Ceramics Course Ceramics Exhibition	P11	10/23 to 10/28																															
		④ ishoken EXHIBITION	P12	11/1 to 11/5																																
		⑦ The 26th MINO Chawan Exhibition	P14	11/8 to 11/17																																
	1F Reception Hall	② Exhibition “Art Brut MINO”	P11	10/18 to 10/30																																
		⑧ Flower Arrangement Contest in MINO	P15	Preliminary Stage : 11/2 (Exhibitor: 11/2～) Final Stage : 11/9 (Exhibitor: 11/9～)																																
	1F Meeting Room	⑥ Minoyaki Exhibition (Interaction with Herend)	P13	10/18 to 11/17																																
	1F Lobby	⑬ cafe	P18	10/18 to 11/17																																
		⑨ Ocarina & cerarina Concert	P16	from 10/26 (Sat. Sun. Holidays)																																
	2F Restaurant	⑪ MINO Re-Lunch	P17	10/18 to 11/17																																
	2F Tea-Ceremony House	⑫ Tea Ceremony “A Cup of Tea in a Minoyaki Tea Bowl”	P17	First day & Sat. Sun. Holidays																																
	2F Museum of Modern Ceramic Art, Gifu	⑥ Minoyaki Exhibition (The Art of the RAMEN Bowl) / Ways of Earth	P13	10/18 to 11/17																																
	3F Roof Plaza	⑥ Pre-CERAMIC VALLEY CRAFT CAMP -TAJIMI-	P13	11/9																																
		⑩ Tajimi Minoyaki Taiko Performance	P16	11/9																																
Ceramic Atelier	⑤ Making & Using Wood-Fired Kiln	P12	10/19.20 11/9.10																																	